



# LAUNCHING AUSTRALIA INTO THE FUTURE

CORPORATE BRIEF

## What is Space Centre Australia?

- A commercial space port and technology park
- Scalable Launch Facilities, Sounding, Sub Orbital, LEO to GTO
  - strategically located to capitalise on the benefit provided to equatorial launches*
- Modern Manufacturing and Test Facility
- Represents significant economic growth for Local and National Economy
- Recognises and includes indigenous culture and heritage in the design
- \$1.1b Infrastructure program funded with private investment and Australian Federal Government Support.



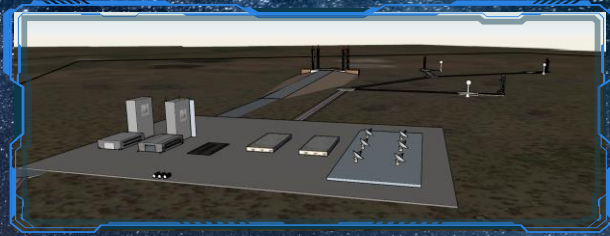
# WHAT CAN SPACE CENTRE AUSTRALIA ENABLE



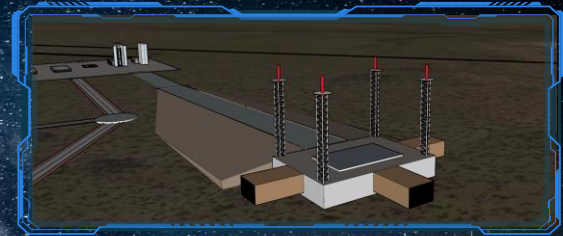
# SCA OVERVIEW



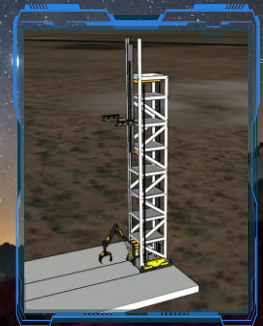
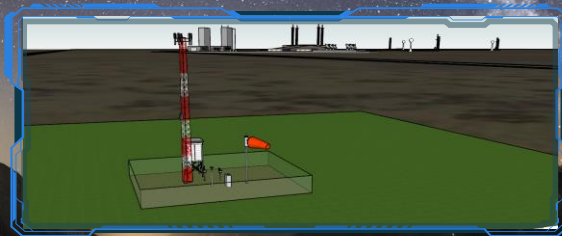
- LAUNCH MOUNT PLATFORMS
- ROCKET SERVICING STRUCTURE
- LAUNCH CONTROL
- MISSION HANDOFF CONTROL
- ROCKET ASSEMBLY ZONE
- HOT FIRE TEST ZONE
- CERTIFICATION FACILITIES



- PAYLOAD PROCESSING FACILITY
- SATELLITE DEVELOPMENT
- SECURE STORAGE FACILITIES
- SPACE DOMAIN SURVEILLANCE
- LAND SURVEILLANCE
- AIR SURVEILLANCE
- MARINE SURVEILLANCE
- AIR RESPONSE AND RECOVERY



- SECURE COMMUNICATIONS CENTRE
- METEOROLOGICAL SURVEILLANCE
- WEATHER RADAR SYSTEM
- GOVERNMENT SECURITY ACCREDITED FACILITIES
- SECURE OFFICE SPACES
- ACCREDITED LABORATORY
- CERTIFIED CLEAN ROOMS
- FIRE RESPONSE FACILITY
- EMERGENCY RESPONSE FACILITY
- ENVIRONMENTAL MANAGEMENT RANGERS COMPOUND





# SPACE CENTRE AUSTRALIA'S JOURNEY

FEASIBILITY  
TECHNICAL  
ECONOMIC  
& SOCIAL  
ASSESSMENTS

LOCAL  
COMMUNITY  
& BUSINESS  
CONSULTATION

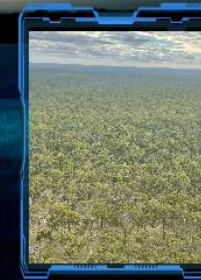
SOCIAL  
MEDIA  
RAMP UP

STAFFING  
RAMP UP

CONTRACT  
DESIGN  
ENVIRONMENTAL  
& CONSTRUCTION  
PARTNERS

LAND ACCESS  
APPROVALS  
RECEIVED &  
ILUA IN  
DEVELOPMENT

CUSTOMER  
BASE INCLUDES  
19 DOMESTIC &  
INTERNATIONAL  
FIRMS

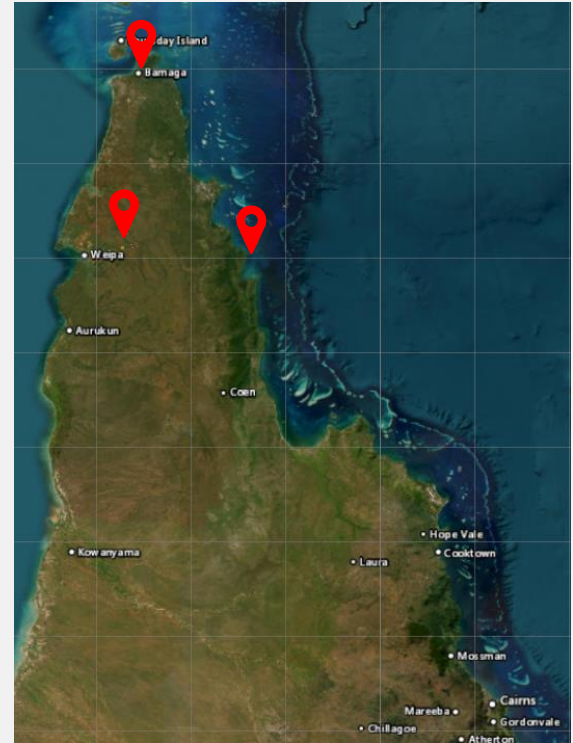


# SCA DEVELOPMENT & CONSTRUCTION



# AUSTRALIAN SITE LOCATIONS

- **SCA Primary Launch Facility, Weipa, North Queensland**
  - Launch Capability (Sounding, SO, LEO, MEO, HEO, DS)
  - Northeast to Easterly Flightpath Aspect
  - Manufacturing, Assembly, Testing and Certification
  - Secure Storage, Logistics, Administration
- **SCA North, Bamaga, North Queensland**
  - RADAR Range Safety Site (Air Search and Maritime)
  - Range Control Site, Tracking and Telemetry
- **SCA East, Lockhart River, North Queensland**
  - RADAR Range Safety Site (Air Search and Maritime)
  - Range Control Site, Tracking and Telemetry





# AUSTRALIAN SITE LOCATIONS

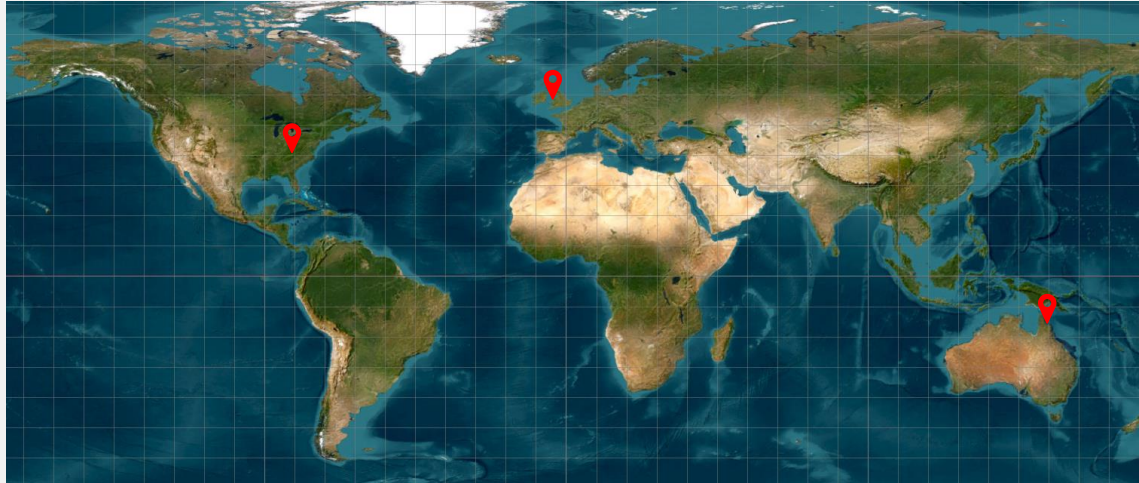
- SCA Headquarters, Cairns, QLD
  - Administration centre
  - Project Office
  - Training and Development Centre





# OUR GLOBAL LOCATIONS

- London, UK
- Washington DC, USA
- Strategic planning 2025 for SE Asia Office



# SCA KEY VALUE PROPOSITION



# SCA VALUE PROPOSITION



# SCA ORDER OF MAGNITUDE EFFECTS



THE GLOBAL SPACE SECTOR  
IN THE NEXT 20 YEARS REVENUE IS EXPECTED TO TRIPLE FROM \$450BN TO \$1.1TN



THE AUSTRALIAN SPACE INDUSTRY  
IS EXPECTED TO REACH \$12BN BY 2030 & CONTRIBUTE 0.24% GDP



VALUE ADD FROM SCA  
\$500M IN FY 2031  
8% TOTAL INDUSTRY VALUE  
GDP IMPACT 0.02%



# SPACE CENTRE AUSTRALIA DIGITAL PLATFORMS

Space Centre Australia's direct messaging to media agencies is supported by a range of digital platforms.

For all media enquiries: [media@spacecentreaustralia.com](mailto:media@spacecentreaustralia.com)

[Spacecentreaustralia.com](http://Spacecentreaustralia.com) should be treated as a single source of truth.



The supporting platforms include:



Facebook  
[www.facebook.com/SpaceCentreAustralia](http://www.facebook.com/SpaceCentreAustralia)



LinkedIn  
[www.linkedin.com/company/space-centre-australia/](http://www.linkedin.com/company/space-centre-australia/)



Instagram  
[@spacecentreaustralia](https://www.instagram.com/spacecentreaustralia)



Twitter  
<https://twitter.com/spacecentreaus>